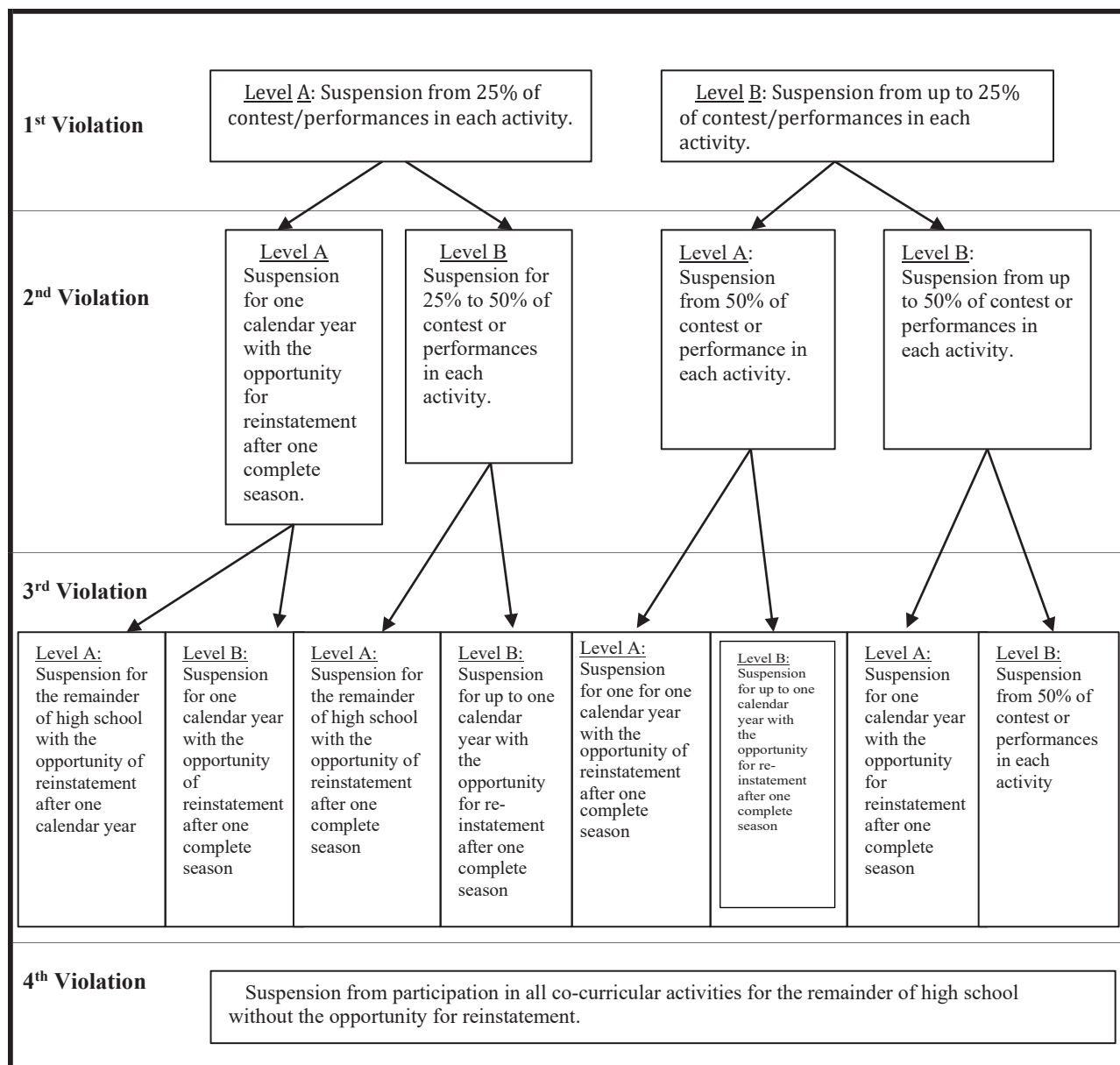


## Code of Conduct APPENDIX B

The following chart describes the progression of consequences for violations of the Co-curricular Code. The consequences differ depending on the classification of each violation and the order in which successive violations occur.



Note:

- With regard to Co-curricular Code enforcement, IHSA activities “season” start is defined by the IHSA calendar. All other activity “season” start dates are determined by the APSA and sponsor.
- Summer is not considered a “season” with regard to suspensions from participation in co-curricular activities.
- For activities covered by the Co-curricular Code that are not “seasonal,” the IHSA definitions of fall, winter, and spring seasons will determine suspension periods